

FASHION ARTICLES

FALL WINTER - 2023-24



GENERAL COLOR

FALL WINTER - 2023-24



Whitecap Gray



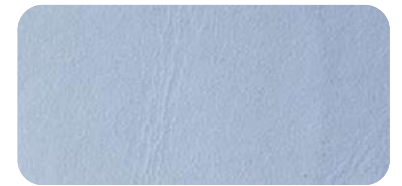
Sepia Rose



Sesame



Tanzine



Zen Blue



Purple Rose



Overcast



Iceberg Green



Vintage Khaki



Ultimate Gray



Curry



Honey Yellow



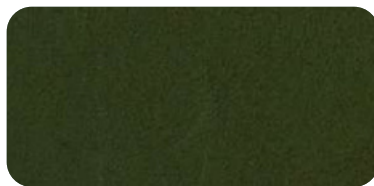
Bombay Brown



Rust



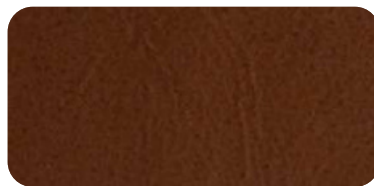
Spaghnum



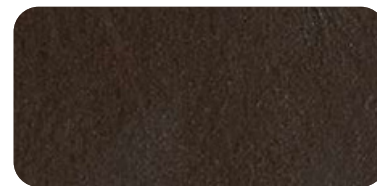
Silver Pine



Rubber



Bison



Java



Kombu Green



Blanc de Blanc



Moonless Night



Salsa



Maroon Banner



Deep Lagoon



Spiced Plum



Arabian Spice



Smoked Paprika



Blue Fusion



Reflecting Pond



Daylily



White Grape



Golden Poppy



Bittersweet



Royal Purple



Sodalite Blue



Azure Blue



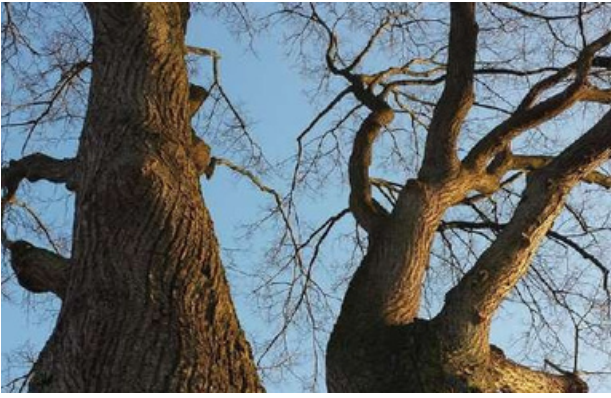
Sea Blue



Aventurine



Naval Academy



Fashion ARTICLES



2023-24 - FALL WINTER EDITION

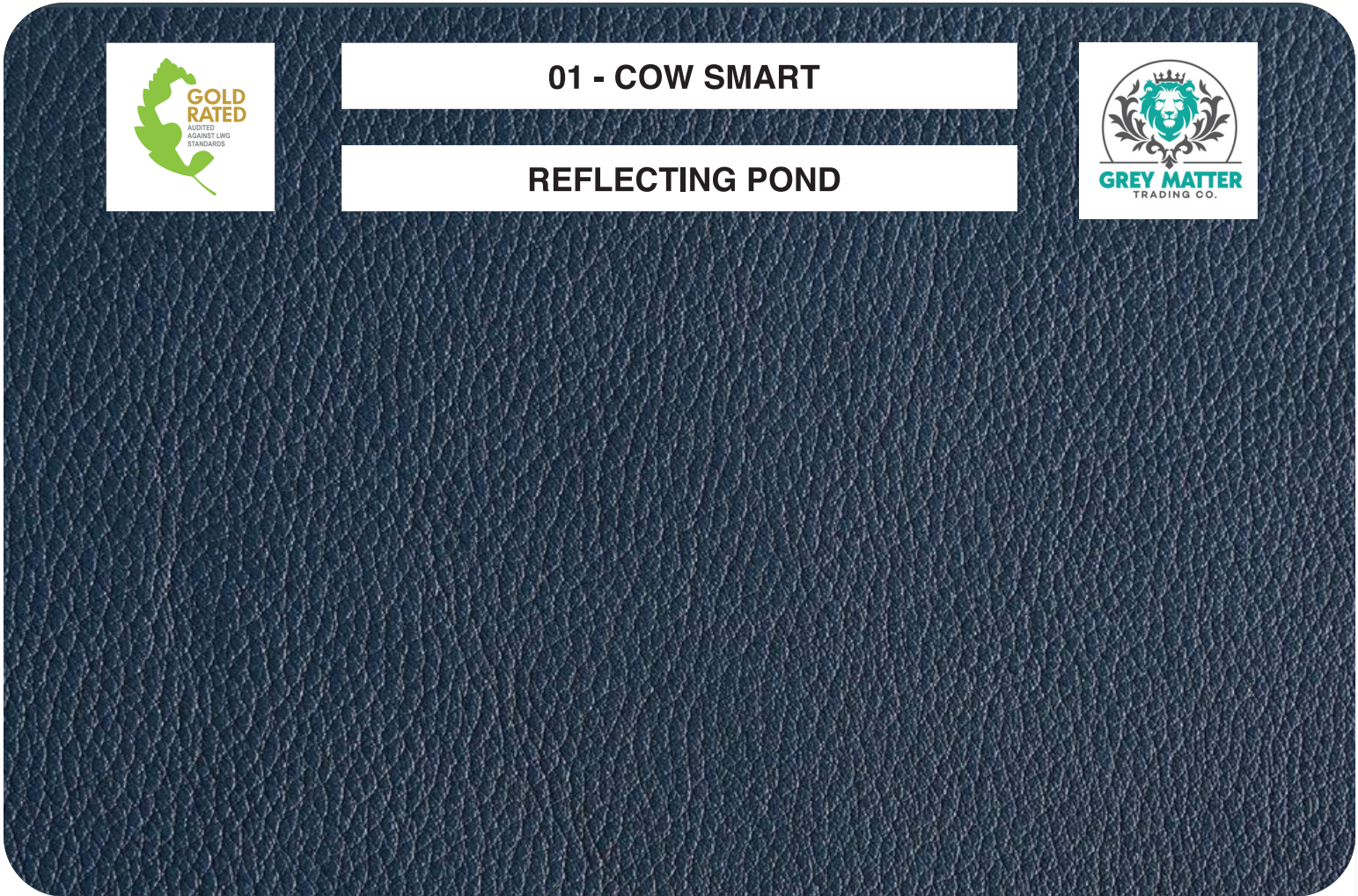






01 - COW SMART

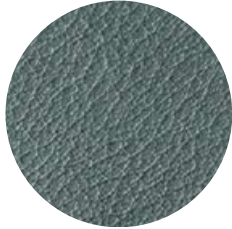
REFLECTING POND



BISON



ROYAL PURPLE



SILVER PINE



HONEY YELLOW



BLACK

PHYSICAL SPECIFICATION

SUBSTANCE	SIZE	SELECTION	DYE THROUGH	SOFTNESS	MOISTURE	TEAR
1.2-1.4mm	12 up sides	TR	Ok	4.5-5.5 mm	10-12%	120 N
Tensile	Milling Pattern	Luster	Fastness		Surface Feel	
			Dry	Wet		
11.30 N	NM	Natural Shine	3-0	2-0	Waxy Grippy	

PRODUCT DESCRIPTION

Natural milled sides with a uniform pebble effect throughout the full skin. This popular and timeless leather is being used for high end footwear, handbags and accessories. Substance 1.2-1.4mm

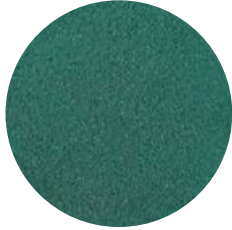


02 - COW NUBUCK

AZURE BLUE



YOLK YELLOW



EVERGREEN



GOLDEN POPPY



SALSA



TAN

PHYSICAL SPECIFICATION

SUBSTANCE	SIZE	SELECTION	DYE THROUGH	SOFTNESS	MOISTURE	TEAR
1.4-1.6mm	12 Up Sides	TR	Ok	3.0-4.0 mm	10-12%	90 N
Tensile	Milling Pattern	Luster	Fastness		Surface Feel	
			Dry	Wet		
12.75 N	N/A	Velvet Sheen	3-0	2-0	Oily Slippery	

PRODUCT DESCRIPTION

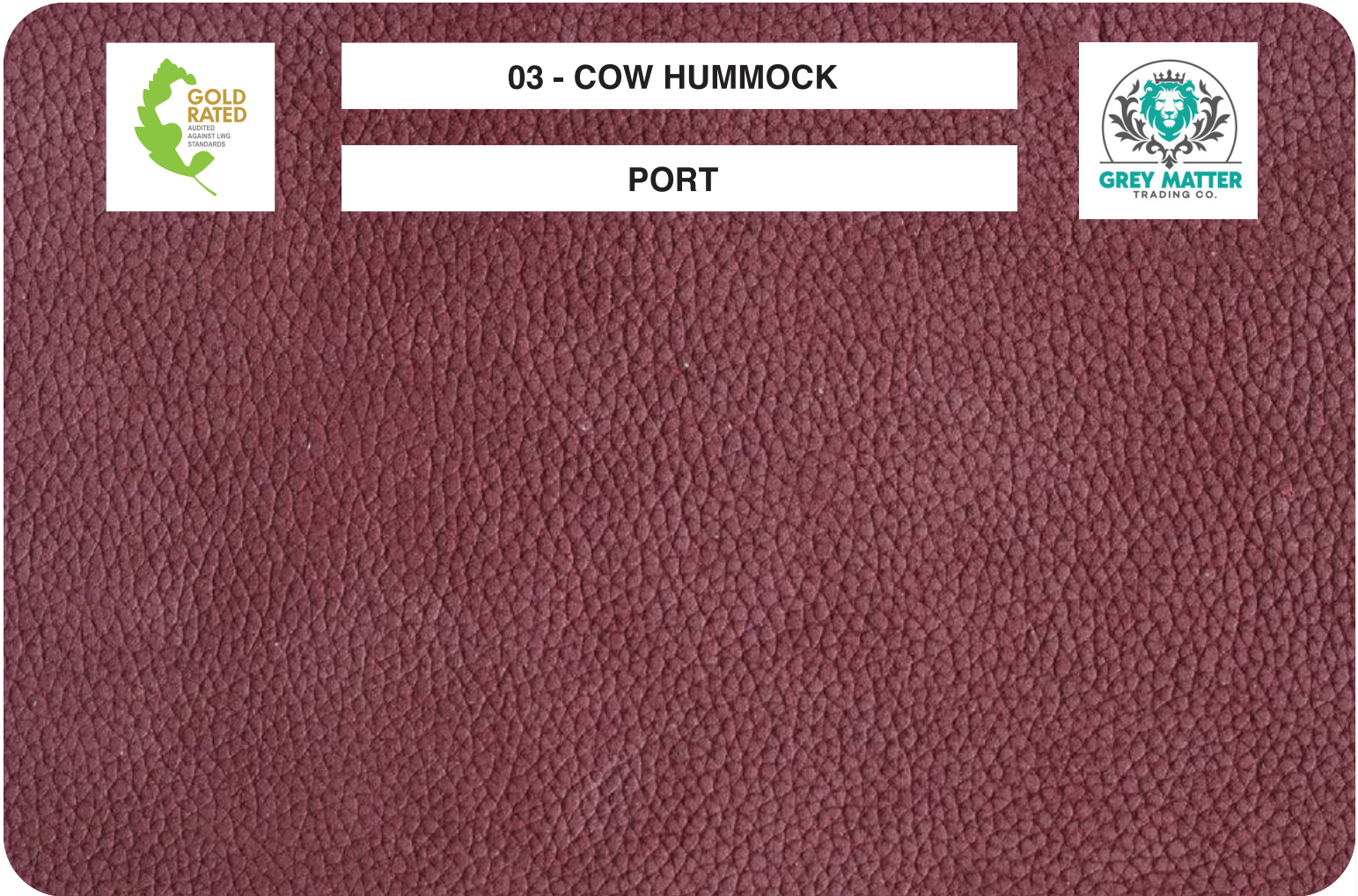
Velvety natural drum-dyed Cow Nubuck made from premium quality hides and suitable for ladies and gents shoes. Leonardo is available in a range of attractive colors with a fine, silky touch. Substance 1.4-1.6mm

FALL WINTER - 2023-24



03 - COW HUMMOCK

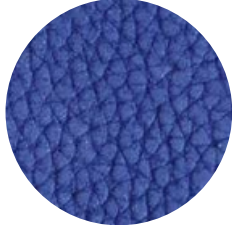
PORT



SESAME



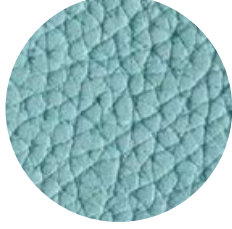
BOMBAY BROWN



SODALITE BLUE



OLIVE BRANCH



SEA BLUE

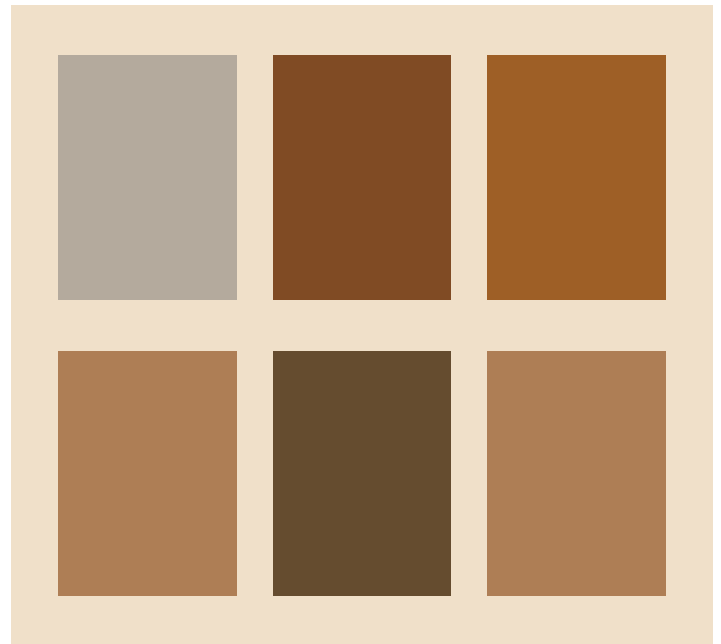
PHYSICAL SPECIFICATION

SUBSTANCE	SIZE	SELECTION	DYE THROUGH	SOFTNESS	MOISTURE	TEAR
1.4-1.6mm	12 up sides	TR	Ok	4.5-5.0 mm	10-12%	180 N
Tensile	Milling Pattern	Luster	Fastness		Surface Feel	
			Dry	Wet		
21 N	Printed Milled	Velvet Sheen	2-0	N/A	Waxy Slippery	

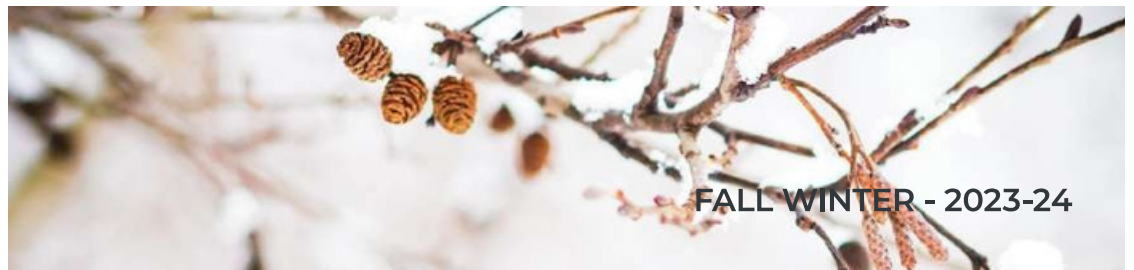
PRODUCT DESCRIPTION

Our popular printed and milled softy cow nubuck, available in an attractive palette of earth-tone colors, with a clear protective top-coat suitable for a wide range of ladies and gents casual footwear. Also available in heavier weights. Substance 1.4-1.6mm.

FALL WINTER - 2023-24



FALL WINTER - 2023-24



FALL WINTER - 2023-24



04 - COW MARINA

KOMBU GREEN



BLACK



ZEN BLUE



JAVA



RUBBER



DEEP LAGOON

PHYSICAL SPECIFICATION

SUBSTANCE	SIZE	SELECTION	DYE THROUGH	SOFTNESS	MOISTURE	TEAR
1.0-1.2mm	12 up sides	TR	Ok	3.5-4.0 mm	10-12%	50.00 N
Tensile	Milling Pattern	Luster	Fastness		Surface Feel	
			Dry	Wet		
11 N	N/A	Matt	2-3	1-2	Waxy	

PRODUCT DESCRIPTION

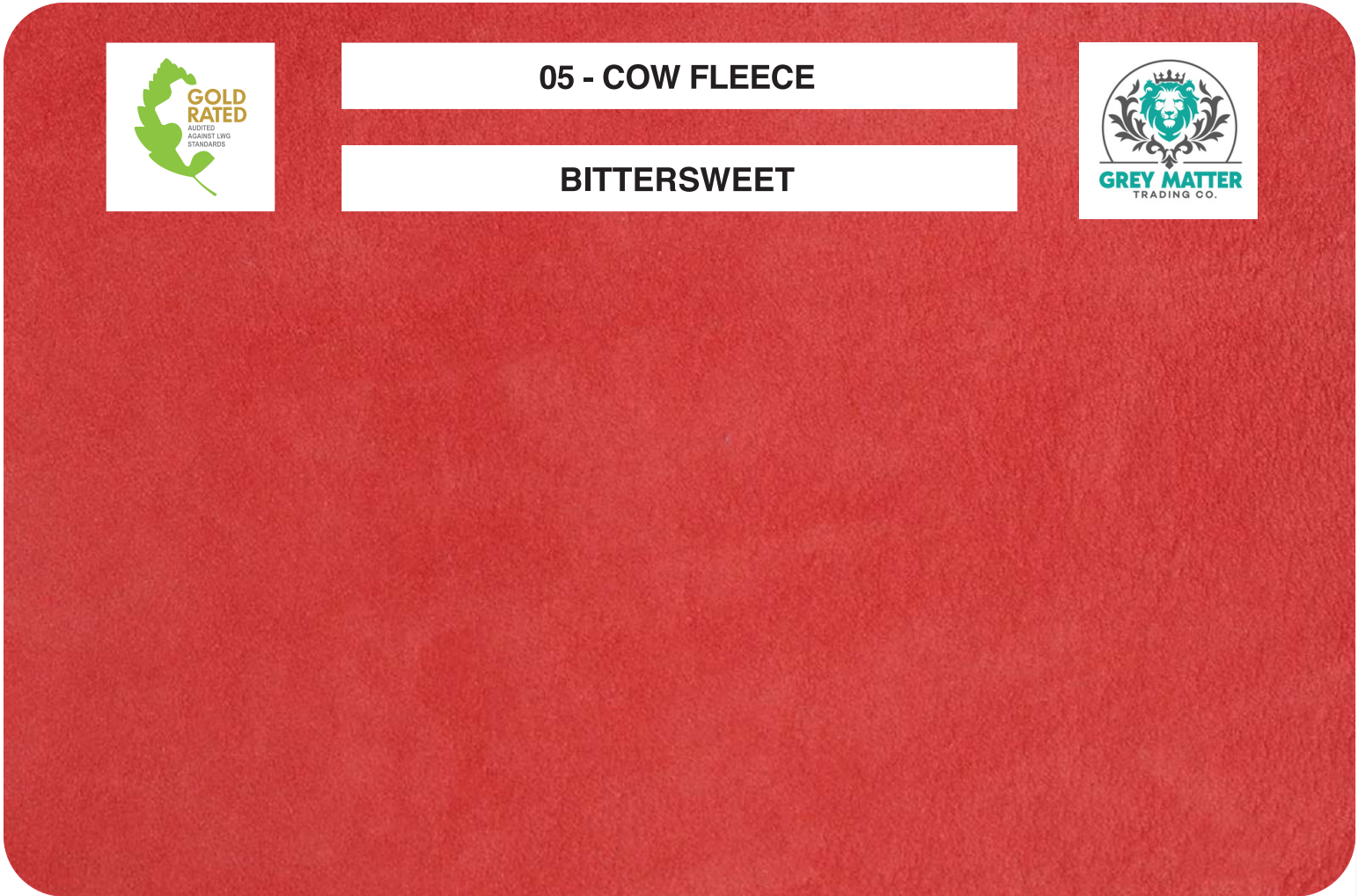
Best selection fully drum-dyed and aniline finished Pakistani Calf skins that are burnish able and used for top quality ladies shoes and wallets. Lightweight premium Calf leather. Substance 1.0-1.2mm.

FALL WINTER - 2023-24

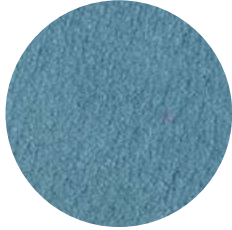


05 - COW FLEECE

BITTERSWEET



TENDER SHOOTS



BLUESTONE



SEPIA ROSE



SPICED PLUM



SAND

PHYSICAL SPECIFICATION

SUBSTANCE	SIZE	SELECTION	DYE THROUGH	SOFTNESS	MOISTURE	TEAR
0.9-1.1mm	12 Up Sides	TR	Ok	7.0-7.5 mm	10-12%	70 N
Tensile	Milling Pattern	Luster	Fastness		Surface Feel	
			Dry	Wet		
12.75 N	NM	Velvet Sheen	2-3	N/A	Waxy Silky	

PRODUCT DESCRIPTION

Our bestselling drum-dyed softy lightweight milled Nubuck cow produced with a very fine waxy dye stain resulting in an attractive and pliable feeling. Can be used in casual shoes and bags. Substance 0.9-1.1mm.

FALL WINTER - 2023-24



06 - COW HOT BURNISH

GRISAILLE



BLACK



SMOKED PAPRIKA



RUST



ICEBERG GREEN



VINTAGE KHAKI

PHYSICAL SPECIFICATION

SUBSTANCE	SIZE	SELECTION	DYE THROUGH	SOFTNESS	MOISTURE	TEAR
0.9-1.1mm	12 Up Sides	TR	Ok	3.5-4.0 mm	10-12%	38 N
Tensile	Milling Pattern	Luster	Fastness		Surface Feel	
			Dry	Wet		
12.80 N	N/A	Dull/ Burnish	N/A	N/A	Slippery Dry	

PRODUCT DESCRIPTION

Snuffed grain but with a very smooth touch shoe upper leather with giving a beautiful polishing effect. A very decent leather for ladies shoes and long boots.

FALL WINTER - 2023-24



FALL WINTER - 2023-24

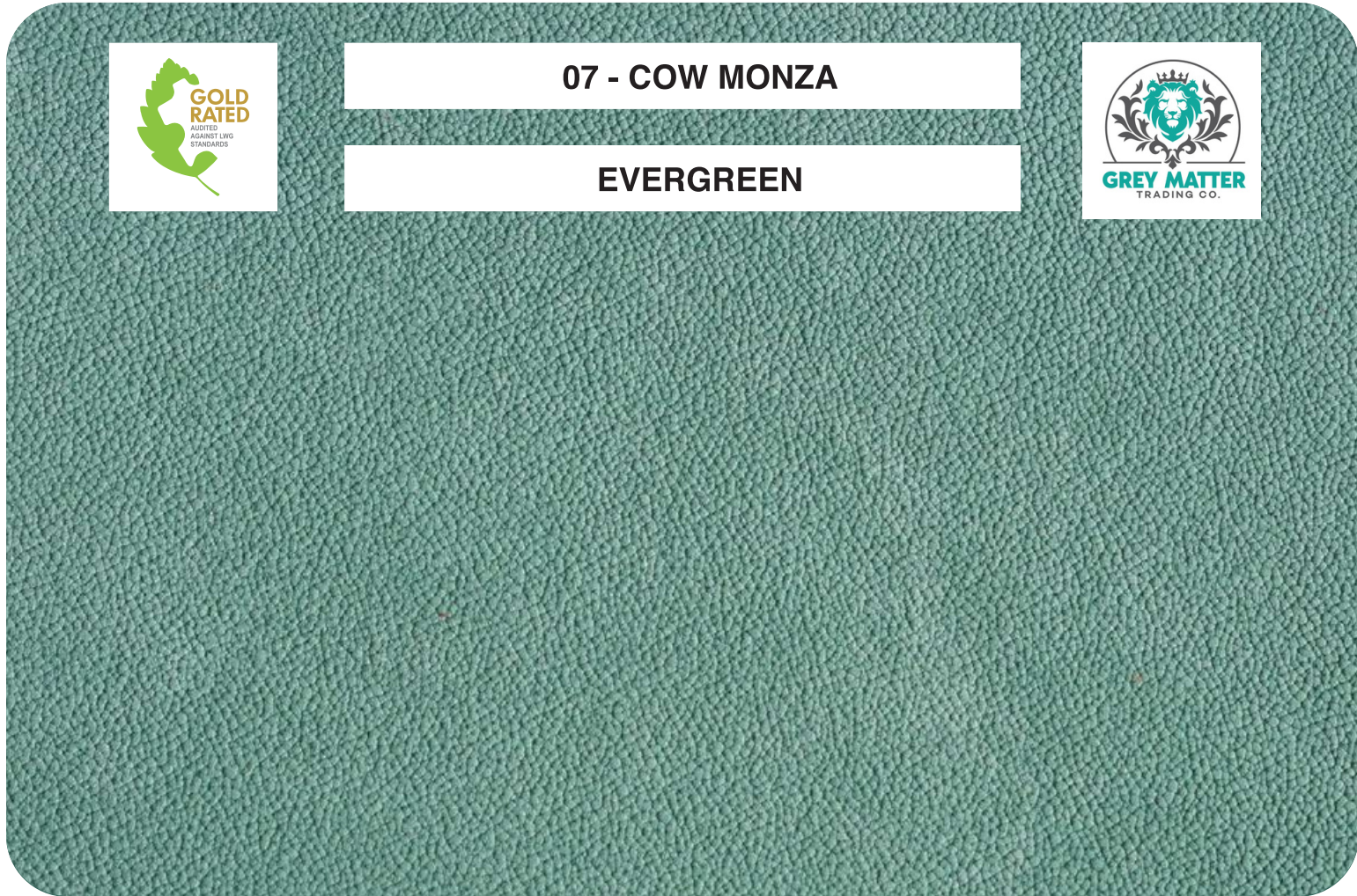
It's a Vibe





07 - COW MONZA

EVERGREEN



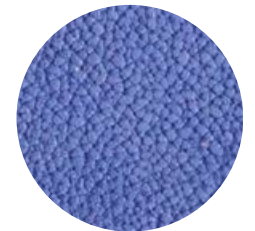
SALSA



HONEY YELLOW



RUBBER



SODALITE BLUE



PURPLE ROSE

PHYSICAL SPECIFICATION

SUBSTANCE	SIZE	SELECTION	DYE THROUGH	SOFTNESS	MOISTURE	TEAR
1.0-1.2mm	12 up sides	TR	Ok	4.5-5.0 mm	10-12%	44.80 N
Tensile	Milling Pattern	Luster	Fastness		Surface Feel	
			Dry	Wet		
11 N	Plated	Natural Shine	2	N/A	Waxy	

PRODUCT DESCRIPTION

Popular fine embossed grain Nubuck used for a variety of ladies shoes Velvety touch and a shine on surface makes this leather very elegant. Suitable for ladies shoes and booties

FALL WINTER - 2023-24



08 - COW CINDERELLA

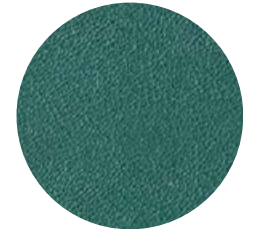
SODALITE BLUE



BITTERSWEET



AZURE BLUE



EVERGREEN



CHOCOLATE TRUFFLE



HONEY YELLOW

PHYSICAL SPECIFICATION

SUBSTANCE	SIZE	SELECTION	DYE THROUGH	SOFTNESS	MOISTURE	TEAR
1.0-1.2mm	12/22 Kips	TR	Ok	5.0-5.5 mm	10-12%	32.50 N
Tensile	Milling Pattern	Luster	Fastness		Surface Feel	
			Dry	Wet		
12.30 N	NM	Medium Shine	3-4	3-0	Waxy Slippery	

PRODUCT DESCRIPTION

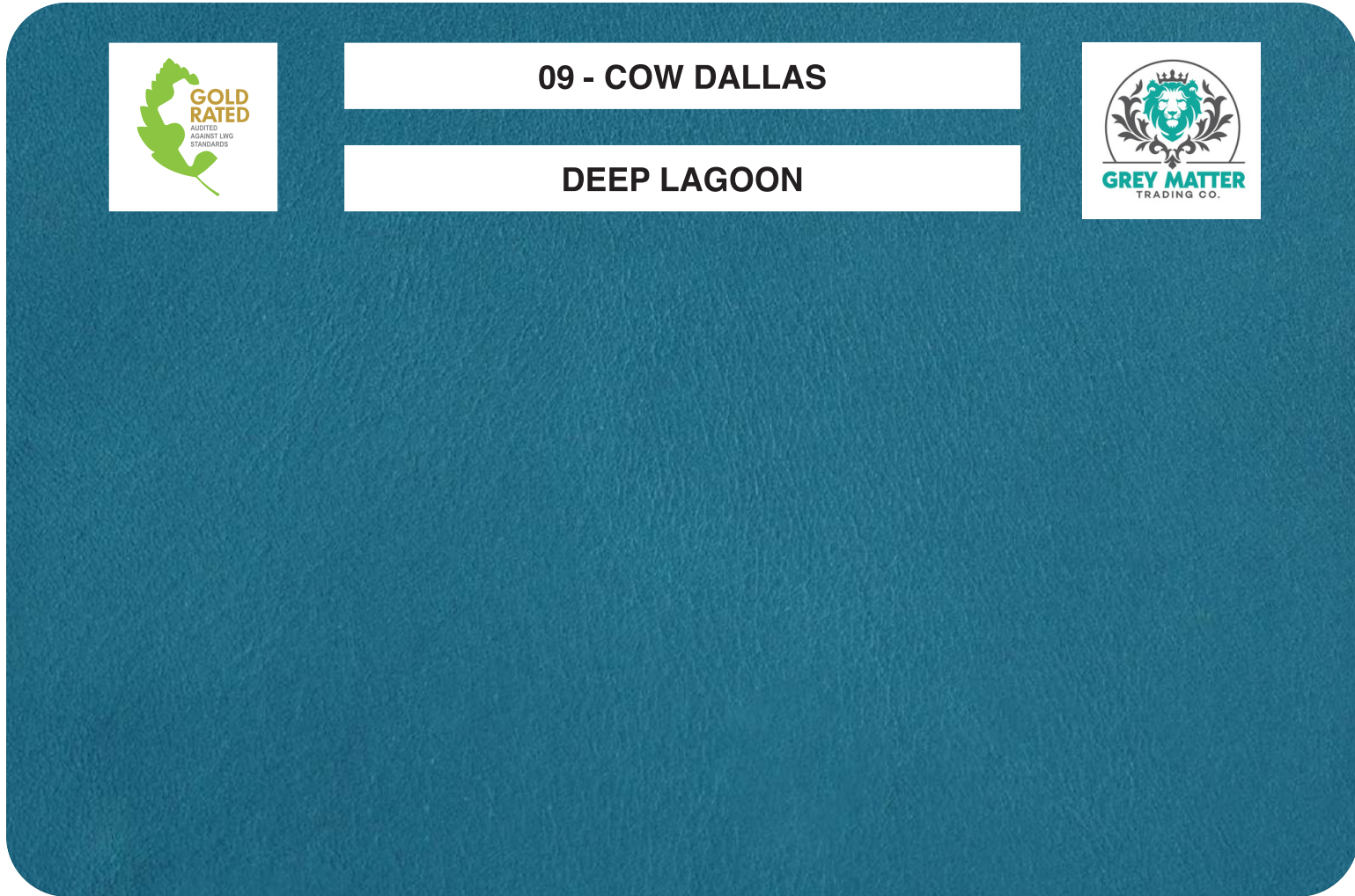
Lightweight and a very soft cowhide specially developed for ladies shoes. Available in a fashionable palette of Fall Winter colors, suitable for the younger generation, and in a wide range of products.

FALL WINTER - 2023-24



09 - COW DALLAS

DEEP LAGOON



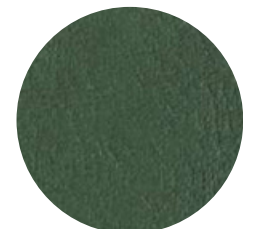
GRIFFIN



SODALITE BLUE



ARABIAN SPICE



KOMBU GREEN



TAN

PHYSICAL SPECIFICATION

SUBSTANCE	SIZE	SELECTION	DYE THROUGH	SOFTNESS	MOISTURE	TEAR
1.2-1.4mm	12 up sides	TR	Ok	3-0-4.0 mm	10-12%	85 N
Tensile	Milling Pattern	Luster	Fastness		Surface Feel	
			Dry	Wet		
16.50 N	Natural Milled	Natural Shine	3-4	3-0	Waxy Warm	

PRODUCT DESCRIPTION

Lightweight and a very soft multi-purpose garment-type cowhide available in a fashionable palette of Fall Winter colors, suitable for the younger generation, and in a wide range of products.

FALL WINTER - 2023-24



FALL WINTER - 2023-24

neutral vibe



casual



relaxed



NEUTRAL ELEGANCE



10 - COW RUMPLE

SALSA



GOLDEN POPPY



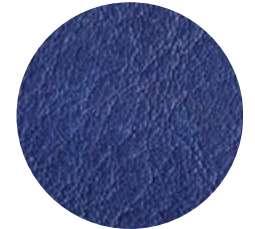
HONEY YELLOW



OLIVE BRANCH



RUST



SODALITE BLUE

PHYSICAL SPECIFICATION

SUBSTANCE	SIZE	SELECTION	DYE THROUGH	SOFTNESS	MOISTURE	TEAR
0.9-1.1mm	12 up sides	TR	Ok	2.5-3.0 mm	10-12%	55 N
Tensile	Milling Pattern	Luster	Fastness		Surface Feel	
			Dry	Wet		
12.50 N	Tumble	Natural	3-0	3-0	waxy Dragy	

PRODUCT DESCRIPTION

Natural full grain chrome free leather with an application of hard wax giving a reversible burishing effect complemented by a tumbled effect A very nice leather for bags and accessories

FALL WINTER - 2023-24

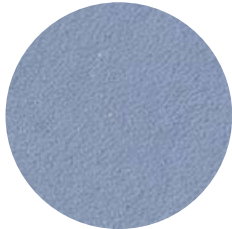


11 - COW MELILLA

TAUPE



RUBBER



GRISAILLE



SMOKED PAPRIKA



SEA BLUE



BLACK

PHYSICAL SPECIFICATION

SUBSTANCE	SIZE	SELECTION	DYE THROUGH	SOFTNESS	MOISTURE	TEAR
1.0-1.2 mm	12 up sides	TR	Ok	2.5-3.0 mm	10-12%	45.00 N
Tensile	Milling Pattern	Luster	Fastness		Surface Feel	
			Dry	Wet		
11 N	N/A	Matt	2-3	1-2	Waxy	

PRODUCT DESCRIPTION

Full Grain cow hides with slightly burnish wax to give spectacular burnishability, specially designed in keeping in mind the use of Mens shoes.

FALL WINTER - 2023-24



12 - COW RICOH

COGNAC



CHILLI



DARK PINK



GREY



LIGHT PURPLE



BLACK

PHYSICAL SPECIFICATION

SUBSTANCE	SIZE	SELECTION	DYE THROUGH	SOFTNESS	MOISTURE	TEAR
0.9-1.1 mm	12 Up Sides	TR	Ok	3.5-4.5 mm	10-12%	45.00 N
Tensile	Milling Pattern	Luster	Fastness		Surface Feel	
			Dry	Wet		
11 N	N/A	Matt	2-3	1-2	Waxy	

PRODUCT DESCRIPTION

Our Soft and Mellow full grain burnishable leather specially developed for ladies shoes. Available in variety of colors.

FALL WINTER - 2023-24



mood.
mood.
mood.



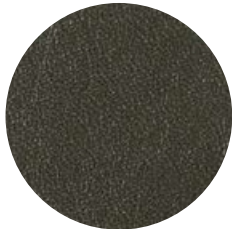


FALL WINTER - 2023-24



13 - COW MONTILLA

BLUESTONE



KOMBU GREEN



HONEY YELLOW



SPICED PLUM



GOLDEN POPPY



SALSA

PHYSICAL SPECIFICATION

SUBSTANCE	SIZE	SELECTION	DYE THROUGH	SOFTNESS	MOISTURE	TEAR
1.0-1.2mm	12 up sides	TR	Ok	5.5-6.0 mm	10-12%	120 N
Tensile	Milling Pattern	Luster	Fastness		Surface Feel	
			Dry	Wet		
11.30	NM	Natural Shine	3-0	2-0	Waxy Slippery	

PRODUCT DESCRIPTION

Our soft natural milled Cow Hides having smooth touch. Best for high end footwear, handbags and accessories.

FALL WINTER - 2023-24



14 - COW OILY

BOMBAY BROWN



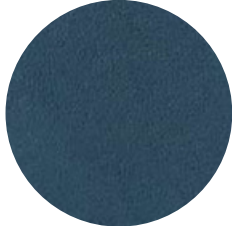
GRIFFIN



SPICED PLUM



SEA BLUE



REFLECTING POND



MOONLESS NIGHT

PHYSICAL SPECIFICATION

SUBSTANCE	SIZE	SELECTION	DYE THROUGH	SOFTNESS	MOISTURE	TEAR
1.1-1.3mm	12 up sides	TR	Ok	3.5-4.0 mm	10-12%	113 N
Tensile	Milling Pattern	Luster	Fastness		Surface Feel	
			Dry	Wet		
16 N	N/A	Medium Shine	3-0	2-0	Waxy Warm	

PRODUCT DESCRIPTION

Our Soft Cow Hides developed using combination of oils and waxes providing smooth hand feel available in variety of fall winter colors.

FALL WINTER - 2023-24



FALL WINTER - 2023-24



FALL WINTER - 2023-24



15 - COW BILLIQ

ROYAL PURPLE



SALSA



AZURE BLUE



BOMBAY BROWN



YOLK YELLOW



TENDER SHOOTS

PHYSICAL SPECIFICATION

SUBSTANCE	SIZE	SELECTION	DYE THROUGH	SOFTNESS	MOISTURE	TEAR
1.0-1.2mm	12 up sides	TR	Ok	5.5-6.5 mm	10-12%	120 N
Tensile	Milling Pattern	Luster	Fastness		Surface Feel	
			Dry	Wet		
11.30 N	NM	Medium Shine	3-0	2-3	Waxy Silky	

PRODUCT DESCRIPTION

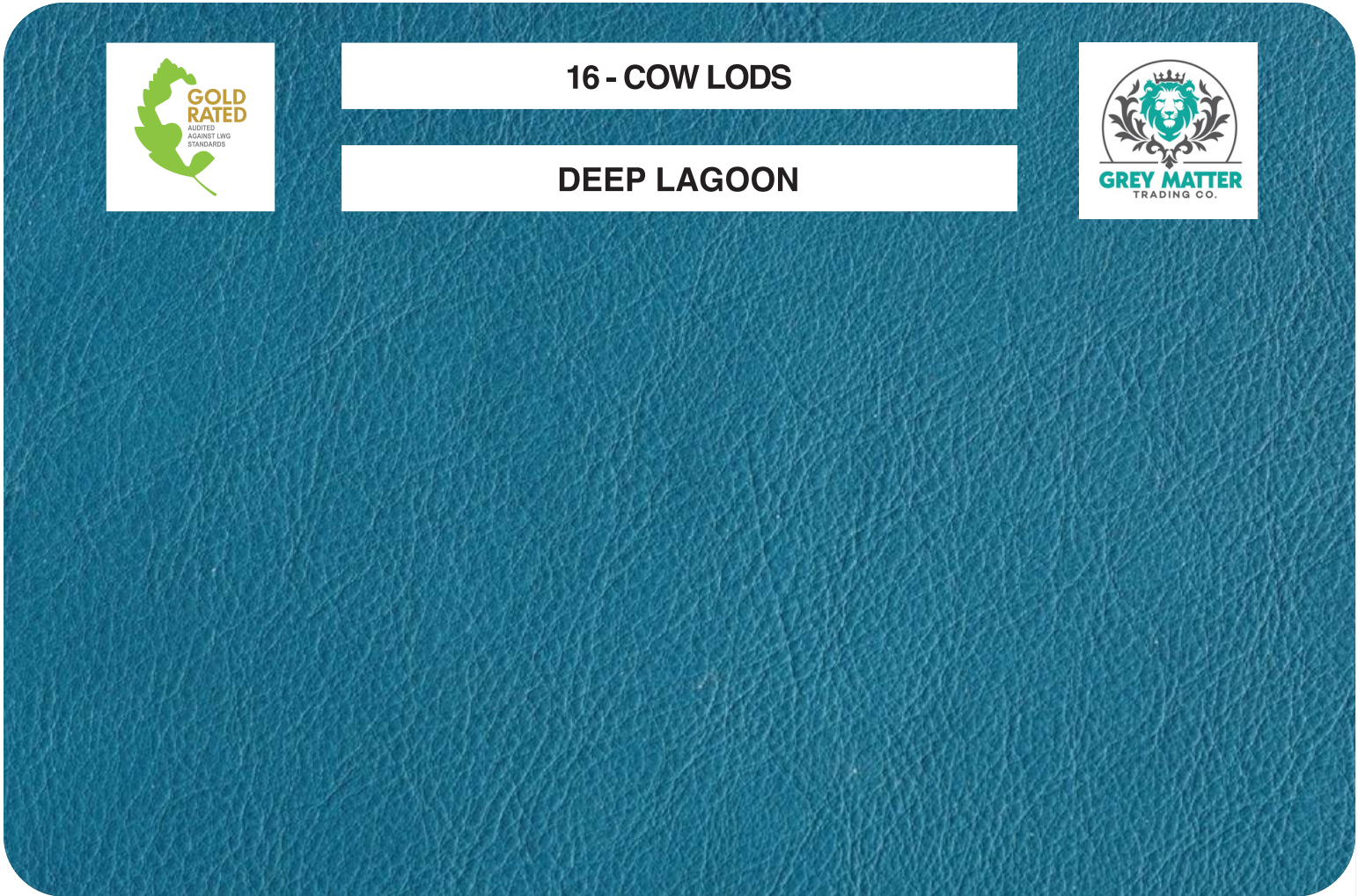
Our drum-dyed glovey cowhide leather also available in a range of fashion colors. Attractive pricing allows this leather to be used in a wide range of casual and youthful applications. Substance 1.0-1.2mm.

FALL WINTER - 2023-24



16 - COW LODS

DEEP LAGOON



TAN



ZEN BLUE



SEPIA ROSE



RUST



JAVA

PHYSICAL SPECIFICATION

SUBSTANCE	SIZE	SELECTION	DYE THROUGH	SOFTNESS	MOISTURE	TEAR
1.0-1.2mm	12 Up Sides	TR	Ok	4.0-5.0 mm	10-12%	55 N
Tensile	Milling Pattern	Luster	Fastness		Surface Feel	
			Dry	Wet		
12.50 N	NM	Natural Shine	3-0	2-0	Waxy Silky	

PRODUCT DESCRIPTION

Our Chrome Free slightly milled with high reactivity cow hides specially designed for ladies and kids shoes.

FALL WINTER - 2023-24



FALL WINTER - 2023-24



FALL WINTER 2023-24

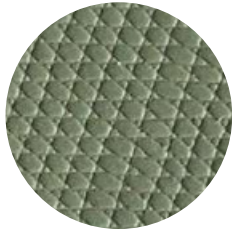


17 - COW ZARA

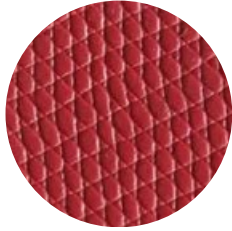
SODALITE BLUE



HONEY YELLOW



OLIVE BRANCH



SALSA



GOLDEN POPPY



SMOKED PAPRIKA

PHYSICAL SPECIFICATION

SUBSTANCE	SIZE	SELECTION	DYE THROUGH	SOFTNESS	MOISTURE	TEAR
1.2-1.4mm	12 up sides	TR	Ok	2.5-3.0 mm	10-12%	113 N
Tensile	Milling Pattern	Luster	Fastness		Surface Feel	
			Dry	Wet		
16 N	Printed	Shiny	3-4	2-3	Waxy Slippery	

PRODUCT DESCRIPTION

A very nice hand feel with our popular Zara print it is suitable for a wide range of end uses for both the footwear and leather goods segments due to its excellent cutting value and economical price.

FALL WINTER - 2023-24

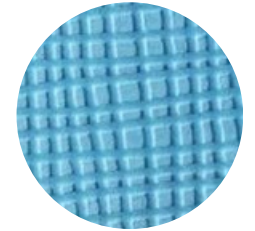


18 - COW MATRIX

KOMBU GREEN



TENDER SHOOTS



AZURE BLUE



SPICED PLUM



CHOCOLATE TRUFFLE



RUST

PHYSICAL SPECIFICATION

SUBSTANCE	SIZE	SELECTION	DYE THROUGH	SOFTNESS	MOISTURE	TEAR
1.2-1.4mm	12 up sides	TR	Ok	2.5-3.0 mm	10-12%	113 N
Tensile	Milling Pattern	Luster	Fastness		Surface Feel	
			Dry	Wet		
16 N	Printed	Natural	3-4	2-3	Waxy Slippery	

PRODUCT DESCRIPTION

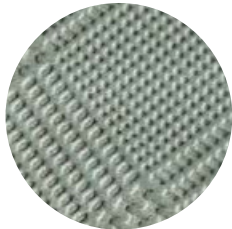
Cubical printed cow hides with slightly crunch effect it is suitable for ladies bags wallets and a variety of leather goods

FALL WINTER - 2023-24



19 - COW BURBERRY

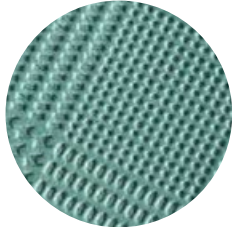
SPICED PLUM



ICEBERG GREEN



GRISAILLE



SEA BLUE



BITTERSWEET



PORT

PHYSICAL SPECIFICATION

SUBSTANCE	SIZE	SELECTION	DYE THROUGH	SOFTNESS	MOISTURE	TEAR
1.2-1.4mm	12 up sides	TR	Ok	2.5-3.0 mm	10-12%	113 N
Tensile	Milling Pattern	Luster	Fastness		Surface Feel	
			Dry	Wet		
16 N	Printed	Shiny	3-4	2-3	Waxy Slippery	

PRODUCT DESCRIPTION

Cubical printed cow hides with a nice finishing it is suitable for ladies bags wallets and a variety of leather goods.



FALL WINTER - 2023-24

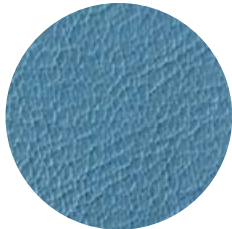


FALL WINTER - 2023-24

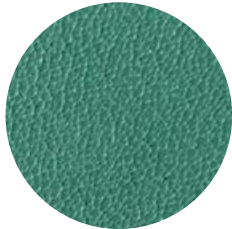


20 - BUFFALO CUTE

SMOKED PAPRIKA



BLUESTONE



EVERGREEN



HONEY YELLOW



VINTAGE KHAKI



MOONLESS NIGHT

PHYSICAL SPECIFICATION

SUBSTANCE	SIZE	SELECTION	DYE THROUGH	SOFTNESS	MOISTURE	TEAR
1.2-1.4mm	12 up sides	TR	Ok	5.5-6.0 mm	10-12%	130 N
Tensile	Milling Pattern	Luster	Fastness		Surface Feel	
			Dry	Wet		
25.50 N	NM	Natural Shine	3-4	2-3	Waxy	

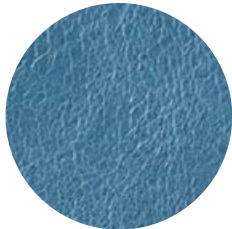
PRODUCT DESCRIPTION

Natural milled full grain leather with a medium shine, This leather can be used for various types of leather accessories and casual footwear.



21 - BUFFALO NAPLES

BISON



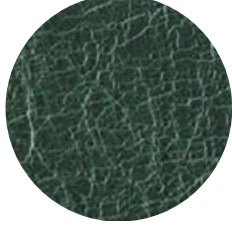
BLUESTONE



GRIFFIN



CHOCOLATE TRUFFLE



KOMBU GREEN



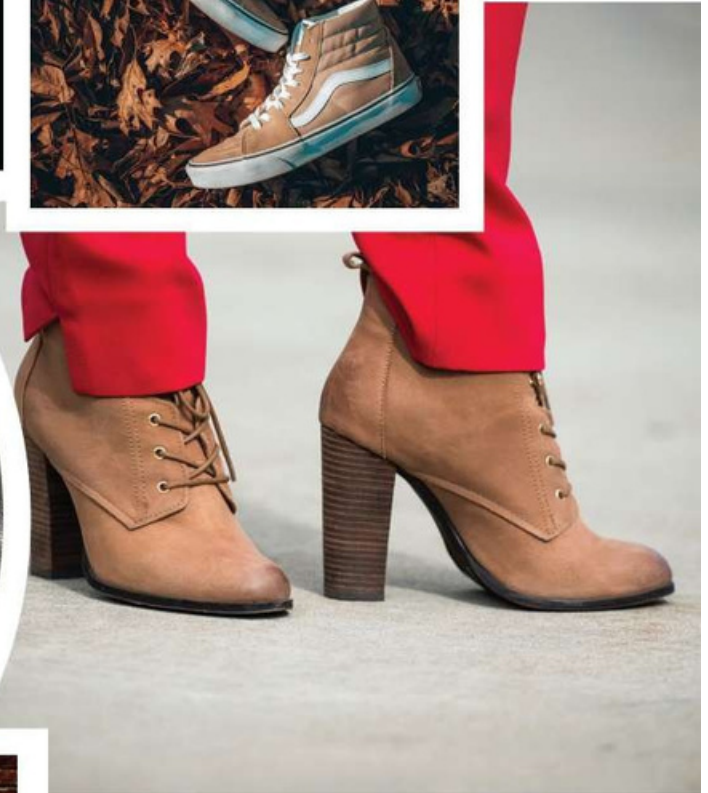
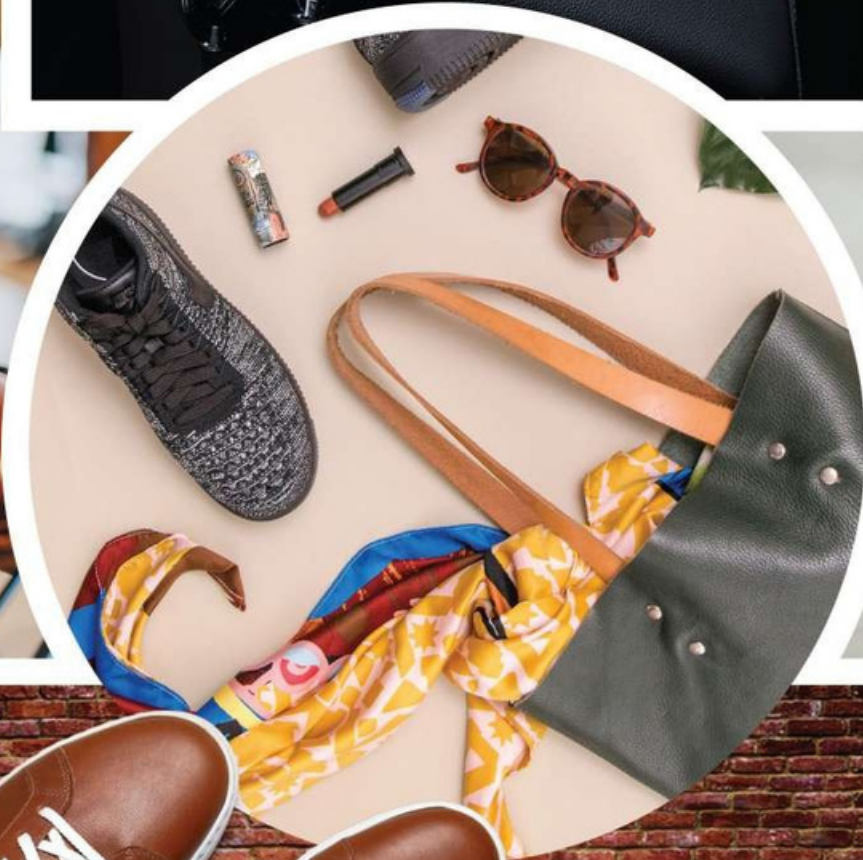
TAN

PHYSICAL SPECIFICATION

SUBSTANCE	SIZE	SELECTION	DYE THROUGH	SOFTNESS	MOISTURE	TEAR
1.1-1.3mm	12 up sides	TR	Ok	4.0-5.0 mm	10-12%	130 N
Tensile	Milling Pattern	Luster	Fastness		Surface Feel	
			Dry	Wet		
25.50 N	NM	Natural Shine	2-0	3-0	Oily Waxy	

PRODUCT DESCRIPTION

Soft and mellow buffalo hides developed using combination of oils and waxes which gives notisable pull up effect.



FALL WINTER - 2023-24

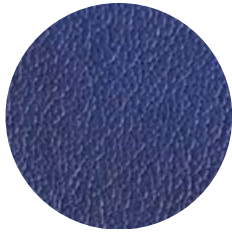


FALL WINTER - 2023-24



22 - BUFFALO FERROL

SEA BLUE



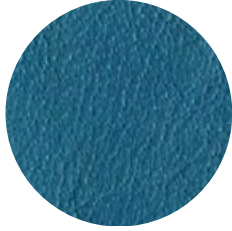
SODALITE BLUE



SAND



GRIFFIN



DEEP LAGOON



JAVA

PHYSICAL SPECIFICATION

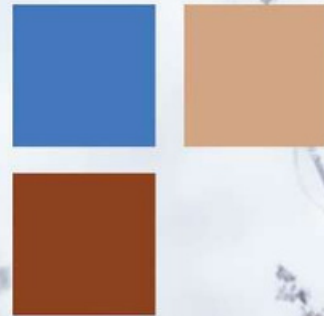
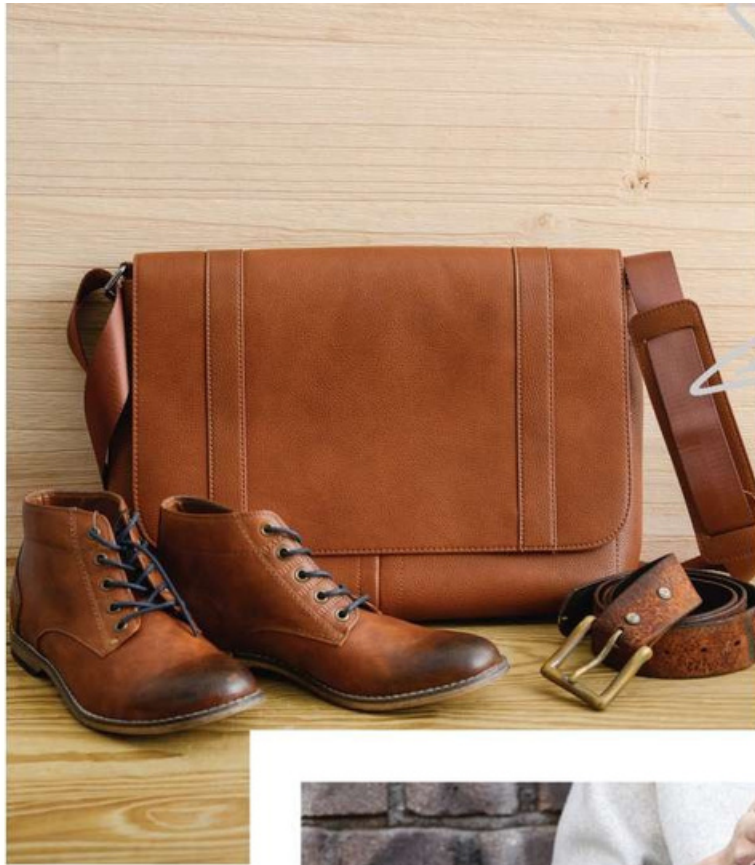
SUBSTANCE	SIZE	SELECTION	DYE THROUGH	SOFTNESS	MOISTURE	TEAR
1.0-1.2mm	12 up sides	TR	Ok	2.5-3.0 mm	10-12%	113 N
Tensile	Milling Pattern	Luster	Fastness		Surface Feel	
			Dry	Wet		
16 N	N/A	Shiny	2-3	2-0	Oily Waxy	

PRODUCT DESCRIPTION

Our famous pull up leather having crunch effect with shiny appearance, specially developed for Men Shoes and leather goods.



FALL WINTER - 2023-24



FALL WINTER - 2023-24